



Silverwater
crossing

RETAIL Africa

About Silverwater Crossing

Silverwater Crossing, located at the bustling intersection of Watermeyer St and Keuning Dr in Meyerspark, Pretoria, boasts high visibility and accessibility. This redevelopment will feature modern architecture, inviting spaces, essential amenities and ample parking.

With a diverse range of retail spaces from 25 m² to 1,500 m², Silverwater Crossing caters to various businesses, enhancing consumer choice and foot traffic. Notable anchor tenants include new Checkers, a revamped Clicks, and Capitec Bank, further boosting its appeal.

The development is conveniently situated near key amenities such as Meyerspark Primary School, Meyerspark High School, and Medi-Clinic Pretoria East, ensuring a vibrant community atmosphere. Nearby parks add green spaces for leisure, enriching the quality of life for residents and shoppers alike.





Fact Sheet



Current GLA: 9900m²

Number of tenants: 40

Anchors: Checkers, Clicks &
Capitec
Drive Thru: McDonalds

Trading hours:

Monday - Thursday: 9am - 6pm

Friday: 9am - 7pm

Saturday, Sunday and Public

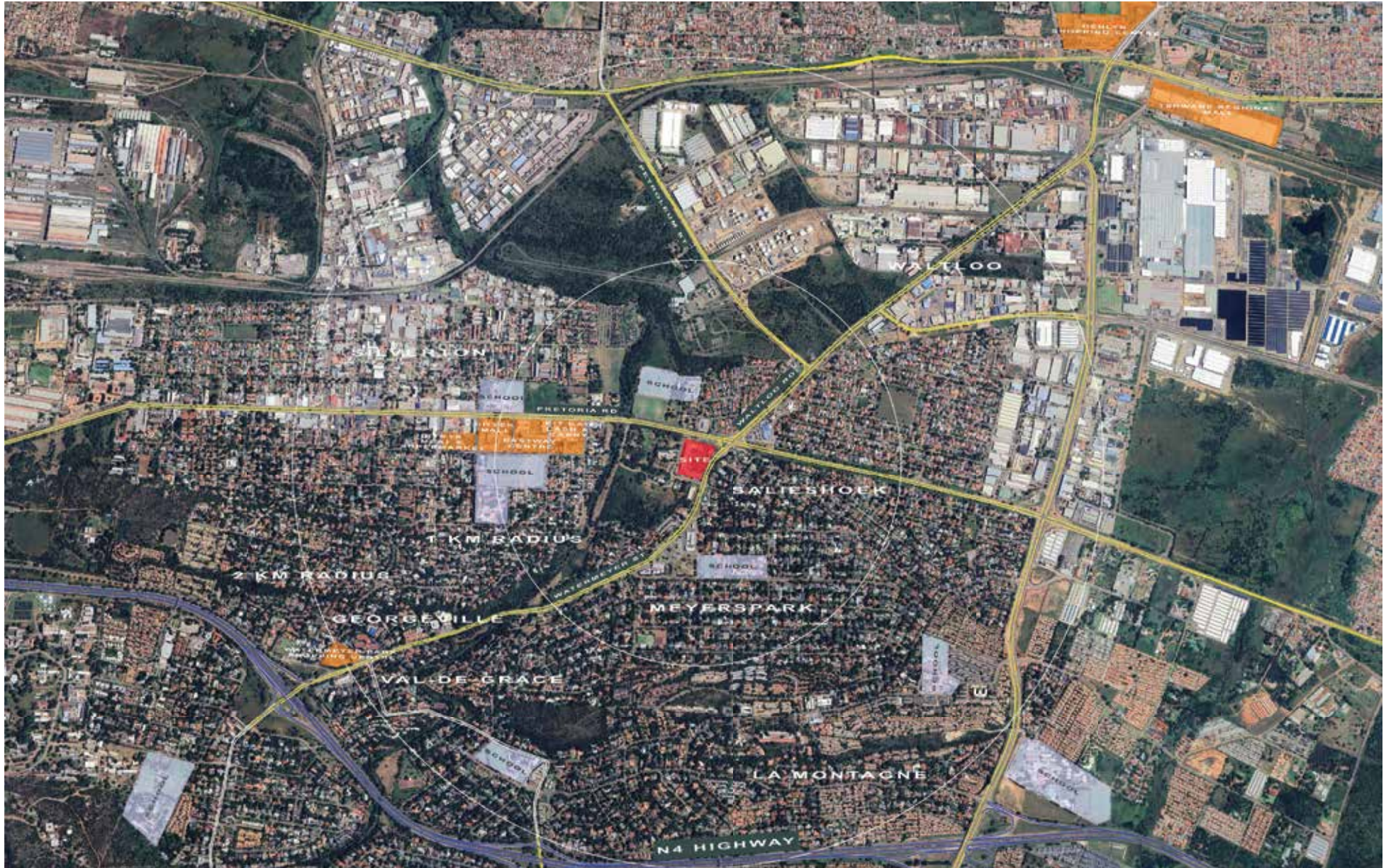
Holidays: 9am - 5pm

Managed by:

PSP Management

Location:

Pretoria, Gauteng



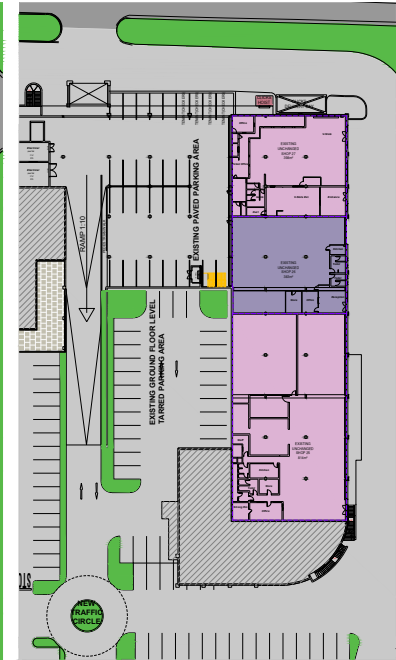
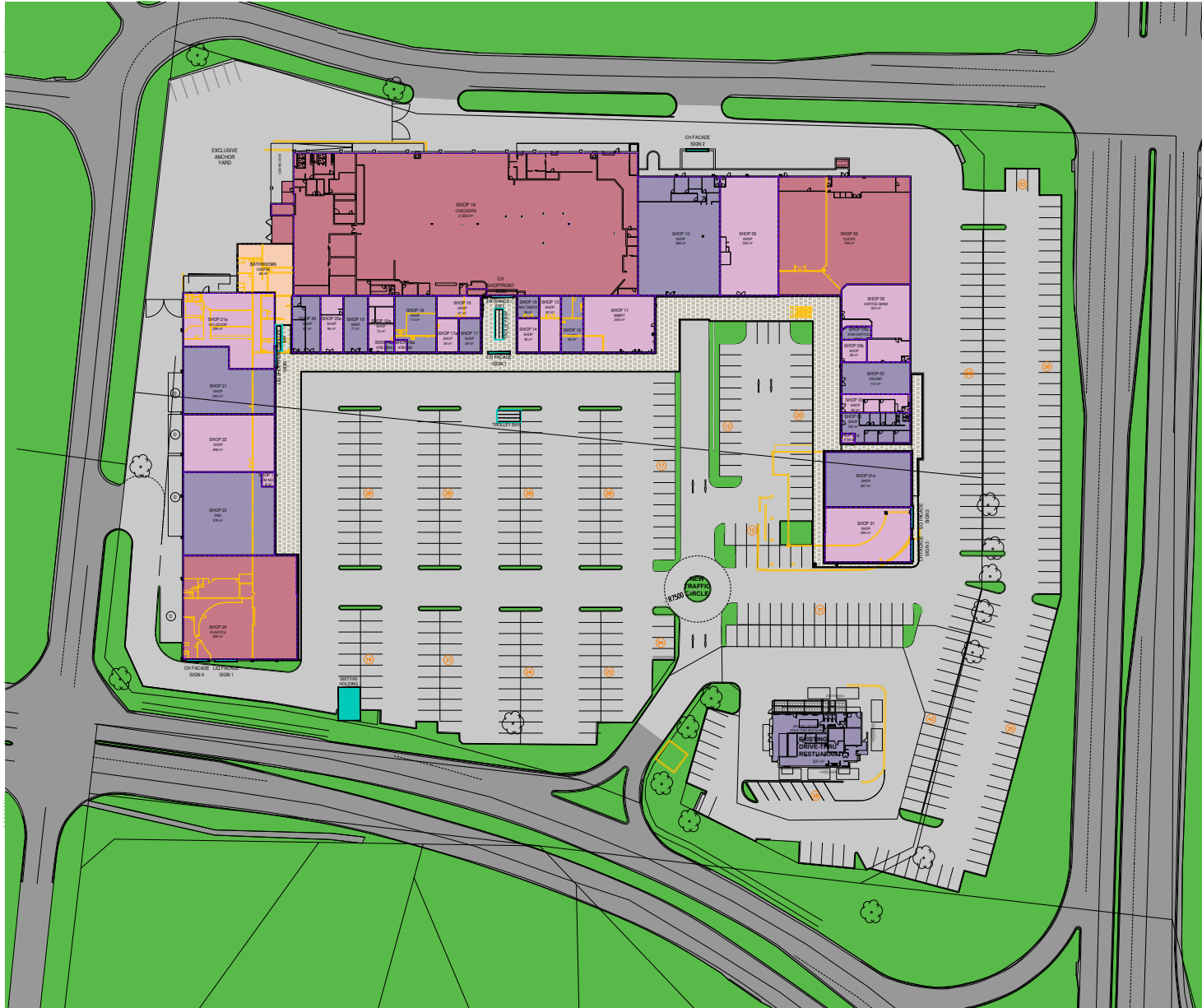
Macro **Locality**





Micro **Locality**





Lower Level

Centre Layout Plan



Checkers



WIMPY

WIMPY



Silverwater
crossing

RETAIL Africa

JOHANNESBURG

Tel: +27 10 020 1810

Email: info@retailafrica.co.za

Web: www.retailafrica.co.za

1 Melrose Square, Amdec House,
Office 303, Melrose Arch, 2076,

P O Box 877, Melrose Arch, 2076

